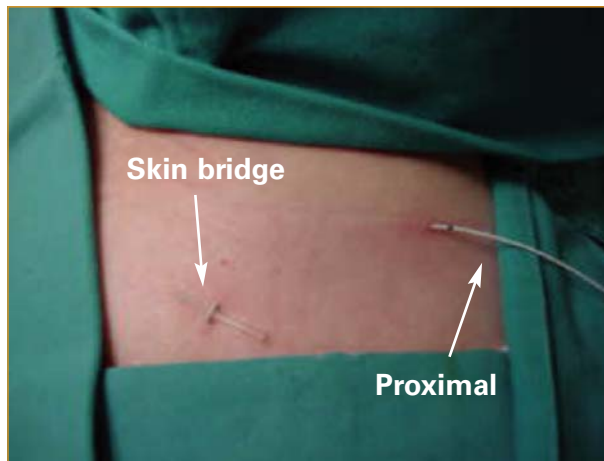
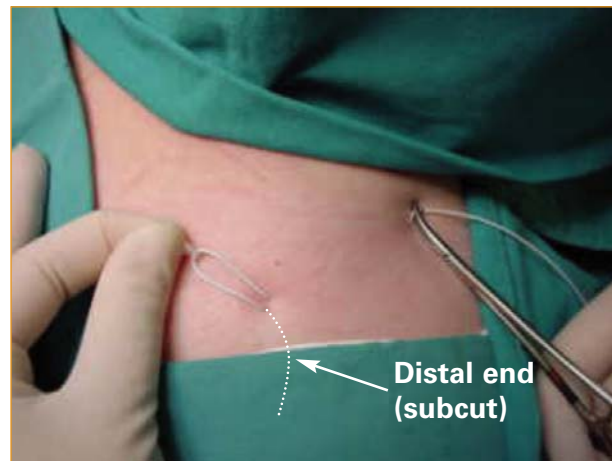


Appendix

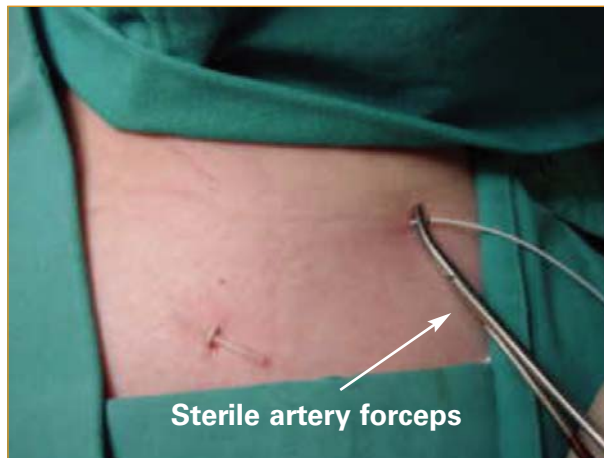
Catheter Removal Technique



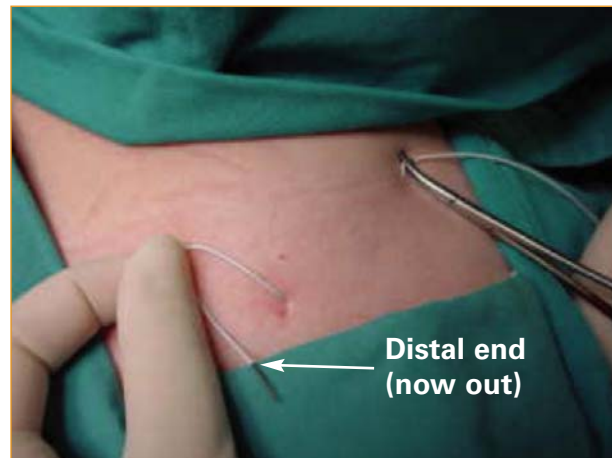
1. Use Sterile technique (formally drape, "scrub" and glove).



3. Pull out distal end (the tip) from the "skin bridge."



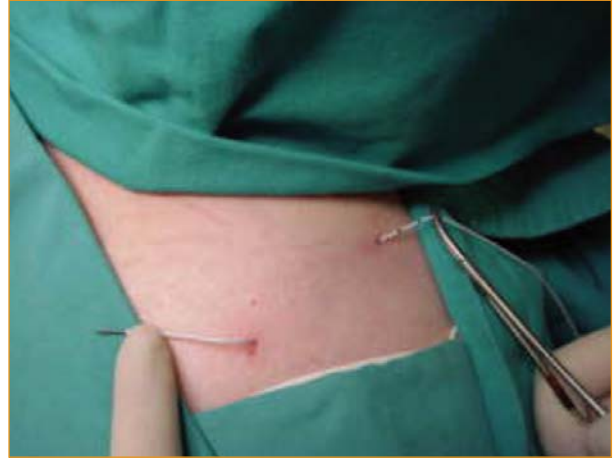
2. Hold proximal end (where it leaves the skin) with a sterile artery forceps.



4. The distal end (tip) now pulled out.



5. Pull out complete catheter with artery forceps.



6. NEVER CUT CATHETER!

- > After removal check catheter and compare with complete new catheter.
- > Keep the tip.
- > Report ANY problems to anesthesiologist.